



REC# #: 752766

RECORDED 5/8/2019 AT 1:16 PM BK# 2620 PG# 1808
Debra K. Lee, CLERK OF LARAMIE COUNTY, WY PAGE 1 OF 1

STATE OF WYOMING CORNER RECORD

(In compliance with the CORNER PERPETUATION AND FILING ACT, Wyoming Statutes, 1997 Section 33-29-140, et. seq., and the Rules and Regulations of the Board of Registrations for Professional Engineers and Professional Land Surveyors)

SOUTH QUARTER CORNER SECTION 13, T. 18 N., R. 62 W., 6TH P.M., LARAMIE COUNTY, WYOMING

GLO: SET A FLINT STONE 16X12X5, 10IN. DEEP, MARKED 1/4 ON N. SIDE FOR 1/4 SEC. COR.

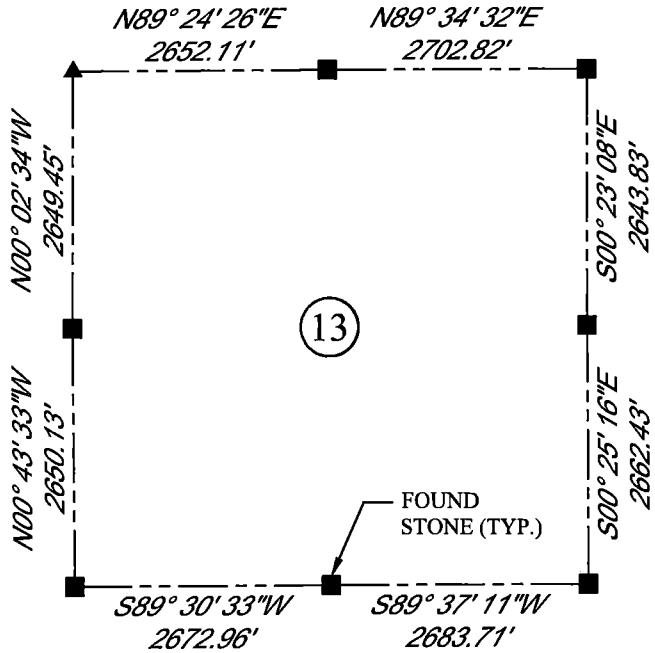
FOUND: SET FLINT STONE, APPROX. 10X8X9, IN NORTH AND SOUTH FENCE LINE. STONE WAS MOSTLY BURIED, NO MARKINGS FOUND. SET ALUMINUM CAP ON SOUTH SIDE OF STONE, MARKED AS SHOWN.



SCALE: NONE

NORTH DETERMINED BY G.P.S OBSERVATIONS

SET 3.25" ALUMINUM CAP ON REBAR 2 1/2IN ABOVE SURFACE, STAMPED AS SHOWN. CORNER IS SET ON SOUTH SIDE OF FOUND STONE.



LEGEND:

- FOUND BLM CAP
- ⊙ FOUND USFS CAP
- FOUND STONE
- FOUND PRIVATE MONUMENT
- ◆ CALCULATED POSITION
- ▲ SET MONUMENT (LS10245)
- SECTION LINE

DATE OF FIELD WORK: 10/4/2018 OFFICE REFERENCE: MERIDEN

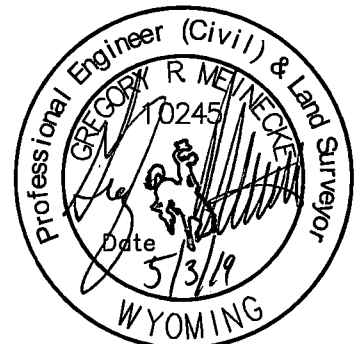
CROSS INDEX DIAGRAM

	1	2	3	4	5	6	7	8	9	10	11	12	13	14	15	16	17	18	19	20	21	22	23	24	25
A																									
B																									
C																									
D																									
E																									
F																									
G																									
H																									
J																									
K																									
L																									
M																									
N																									
O																									
P																									
Q																									
R																									
S																									
T																									
U																									
V																									
W																									
X																									
Y																									
Z																									
	1	2	3	4	5	6	7	8	9	10	11	12	13	14	15	16	17	18	19	20	21	22	23	24	25

WOOD
2615 AVIATION DRIVE
SHERIDAN, WY 82801
PH: 307-675-6400



THIS CORNER RECORD WAS PREPARED BY ME OR UNDER MY DIRECTION AND SUPERVISION, SEAL AND SIGNATURE



CORNER NAME: SOUTH QUARTER SECTION: 13 T. 18 N., R. 62 W. ; 6TH P.M. CROSS-INDEX # N-23
SBRPELS/PLSW: MARCH 1994; PLSW JANUARY 1998